

A line of orange HAMM and VOGLER road rollers is parked on a city street. The rollers are arranged in a line, with the HAMM rollers in the foreground and the VOGLER rollers further back. The background features a mix of modern glass skyscrapers and older, classical-style buildings. The sky is blue with some light clouds. The text is overlaid on the image in a bright yellow color.

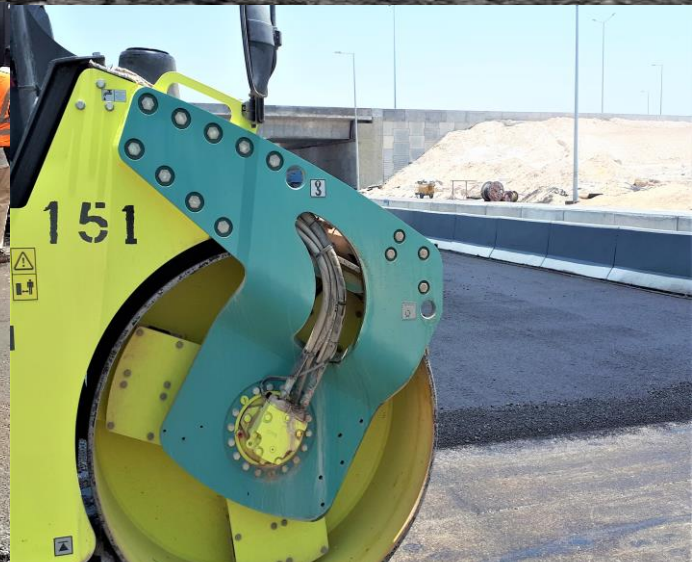
Professionelle Schulungen für Asphalt im Straßenbau weltweit Professional Training For Asphalt Application Worldwide

ASPHALT APPLICATION

TRAINING > Reinhard Statnik

ASPHALT – APPLICATION - TRAINING

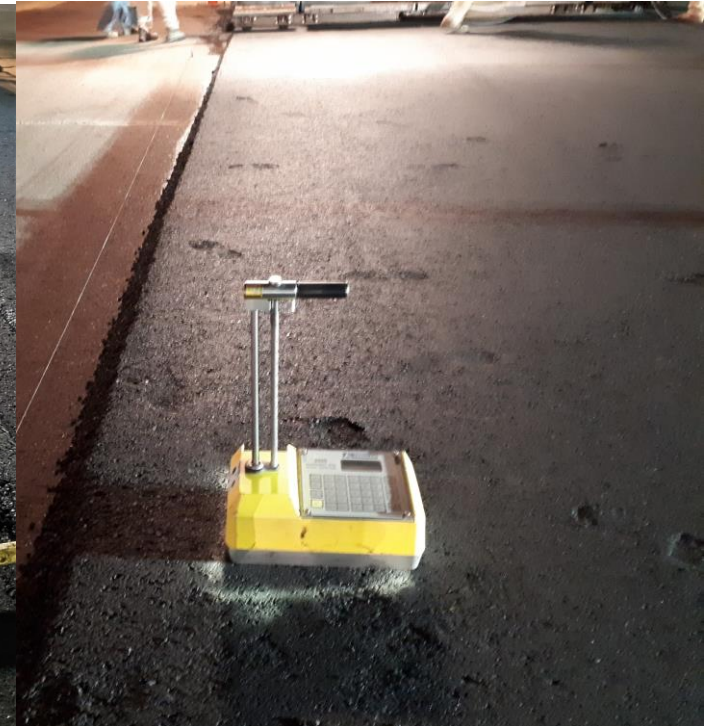
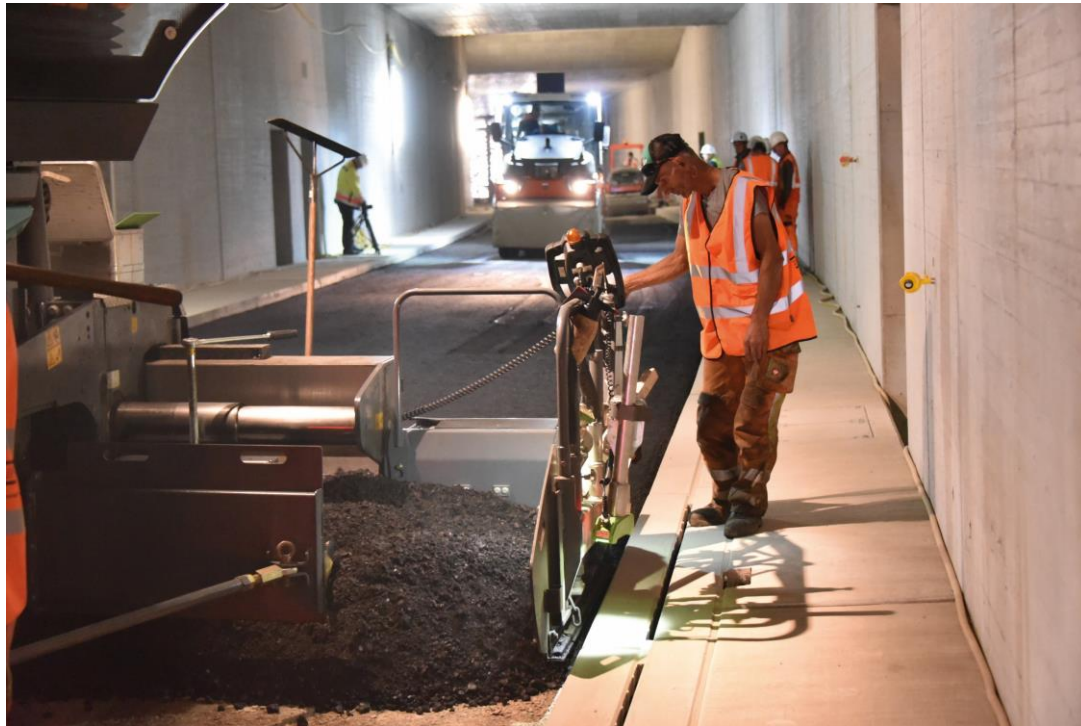
> Reinhard Statnik



ASPHALT - APPLICATION - TRAINING

Reinhard Statnik

Quality control during asphalt paving



ASPHALT – APPLICATION - TRAINING

Reinhard Statnik

Basics of compaction in asphalt and earthwork



ASPHALT – APPLICATION - TRAINING

Reinhard Statnik

Training - paving - special application - asphalt



ASPHALT – APPLICATION - TRAINING

> Reinhard Statnik

Training for engineers, authorities or officials in road planning



ASPHALT – APPLICATION - TRAINING

Reinhard Statnik

Operator training for earthwork rollers



ASPHALT – APPLICATION - TRAINING

Reinhard Statnik

Operator training for asphalt rollers



ASPHALT – APPLICATION - TRAINING

Reinhard Statnik

Compaction processes for earthwork and asphalt

