

A line of orange HAMM and VOGLER road rollers is parked on a city street. The rollers are arranged in a line, with the HAMM rollers in the foreground and VOGLER rollers further back. The background features a mix of modern glass skyscrapers and older, classical-style buildings. The sky is blue with some light clouds. The overall scene suggests a professional training or demonstration event for road construction equipment.

Professionelle Schulungen für Asphalt im Straßenbau weltweit Professional Training For Asphalt Application Worldwide

ASPHALT APPLICATION

TRAINING > Reinhard Statnik

ASPHALT – APPLICATION - TRAINING

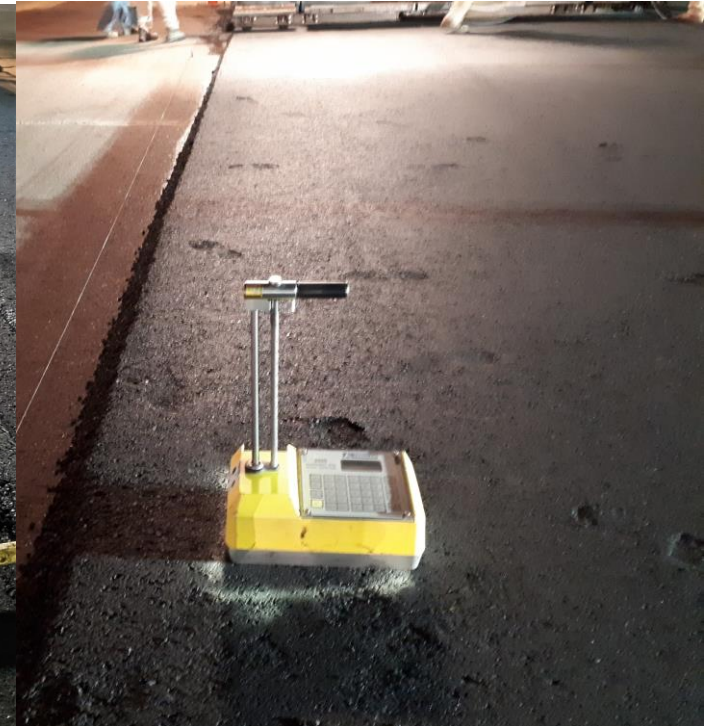
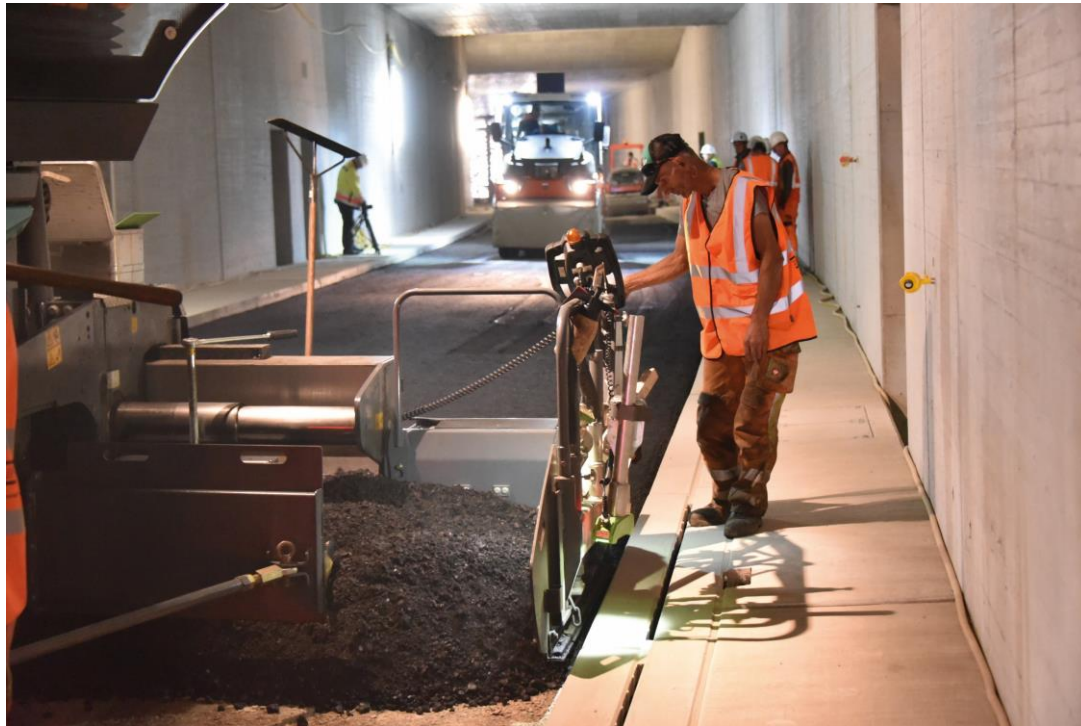
> Reinhard Statnik



ASPHALT - APPLICATION - TRAINING

Reinhard Statnik

Qualitätskontrolle beim Asphalt Einbau



ASPHALT – APPLICATION - TRAINING

Reinhard Statnik

Grundlagen der Verdichtung, Erdbau und Asphalt



ASPHALT – APPLICATION - TRAINING

Reinhard Statnik

Einbau Schulung, Sonderanwendung für Asphalt



ASPHALT – APPLICATION - TRAINING

> Reinhard Statnik

Schulung für Ingenieur, Behörden oder Ämter für Straßenplanung



ASPHALT – APPLICATION - TRAINING

Reinhard Statnik

Fahrschulung für Erdbauwalze



ASPHALT – APPLICATION - TRAINING

Reinhard Statnik

Fahrerschulung für Asphaltwalze



ASPHALT – APPLICATION - TRAINING

Reinhard Statnik

Verdichtungsverfahren für Erdbau, Asphalt

